

LUMINAIRE PHOTOMETRIC TEST REPORT

Luminaire Property

Manufacturer: 0
 Luminaire Type: 筒灯-15W-4000K-60度
 Lamp Type:
 Luminous Width: 80 mm
 Luminous Length: 100 mm
 Luminous Height: 0 mm

Voltage(V): 219.12 V
 Current(A): 0.0658 A
 Power(W): 14.14 W
 Power Factor: 0.9812
 Lamp Luminous Flux: 1807.02

Photometric Results

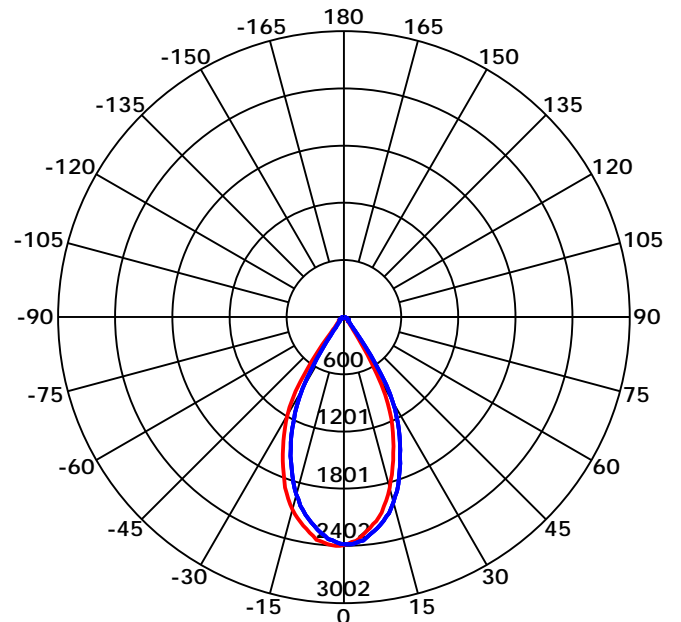
CIE Class: Direct
 Luminaire Luminous Flux: 1807.019 lm
 Downward Ratio: 100.00%
 Luminaire Efficacy Rating(LER): 127.78 lm/W
 Beam Angle(50%) C0-180,C90-270: 54.3,53.9
 Field Angle(10%) C0-180,C90-270: 74.3,73.8
 S/MH C0-180,C90-270: 0.849,0.808

Max. Intensity: 2401.59 cd
 Max.Intensity Angle: C=180 Gamma=2
 Upward Ratio: 0.00%
 Efficacy: 100.00%
 Center Intensity: 2395.37 cd
 Effective Luminous Flux: 1626.84 lm
 ERP(φ use)(120deg): 1769.44 lm

Picture of Luminaire



Luminous Intensity Distribution Curve



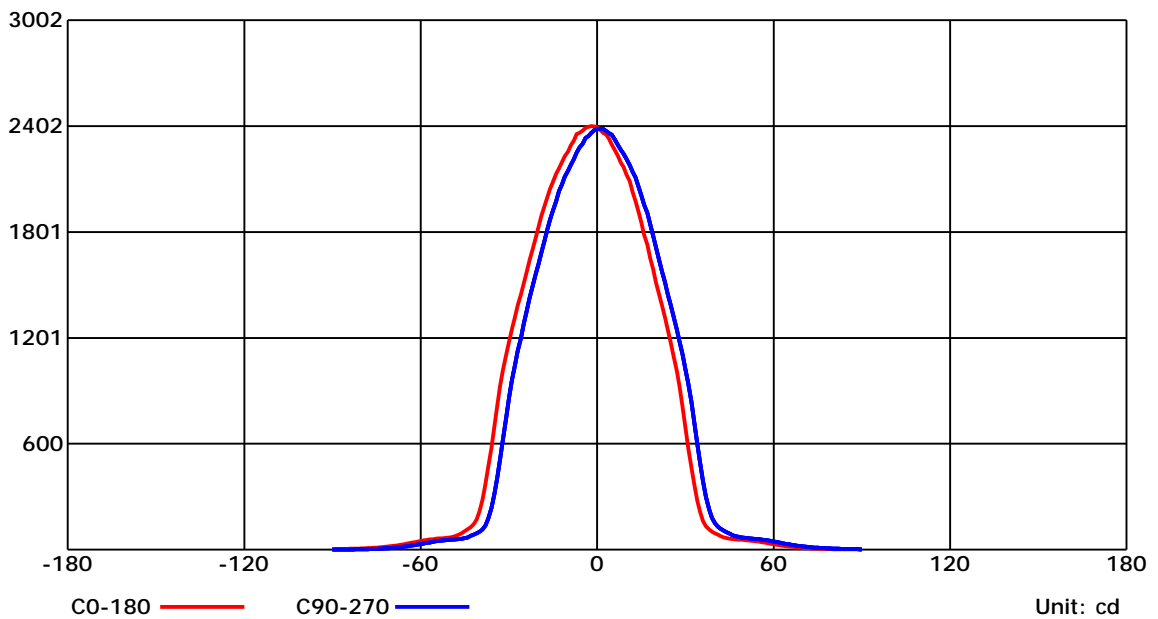
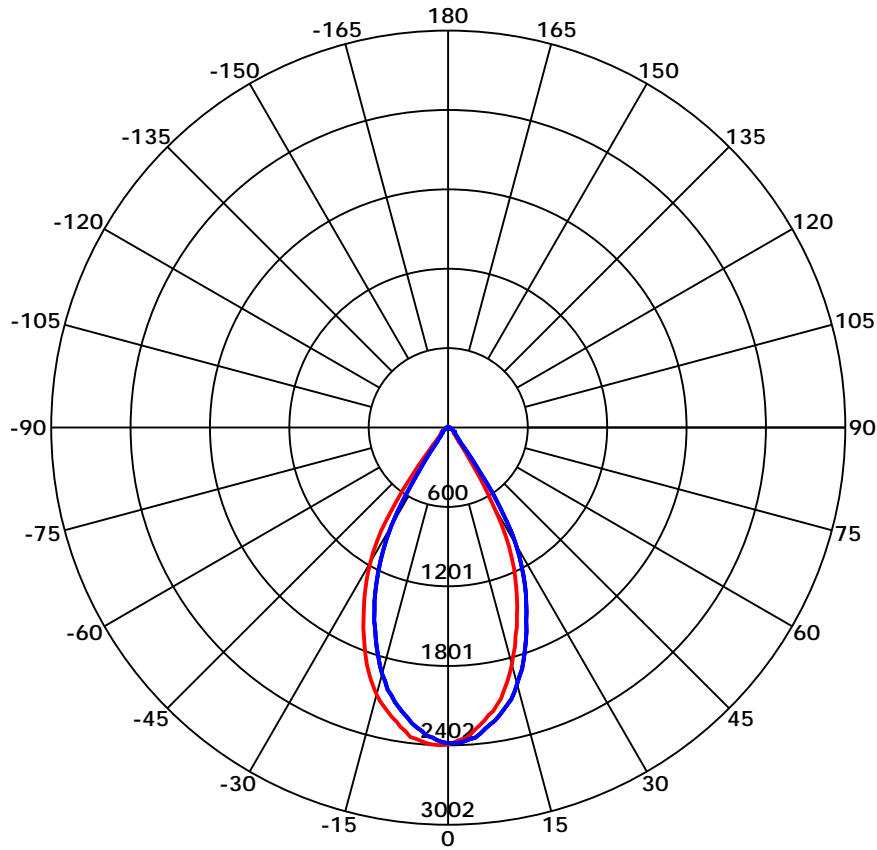
Beam Angle(50%) C0-180,C90-270: 54.3 deg,53.9 deg

C0-180 ——— C90-270 ———

C Range: 0 - 360 Deg
 C Interval: 45.0 Deg
 Test Speed: High
 Temperature: 22°C
 Operators: 代婷婷
 Test Date: 2023/12/4 15:51:18

G Range: 0 - 90 Deg
 G Interval: 1.0 Deg
 Test System: KEYUAN KYG-2000B Goniophotometer
 Humidity: 50%
 Test Distance: 8.558 m
 Remarks:

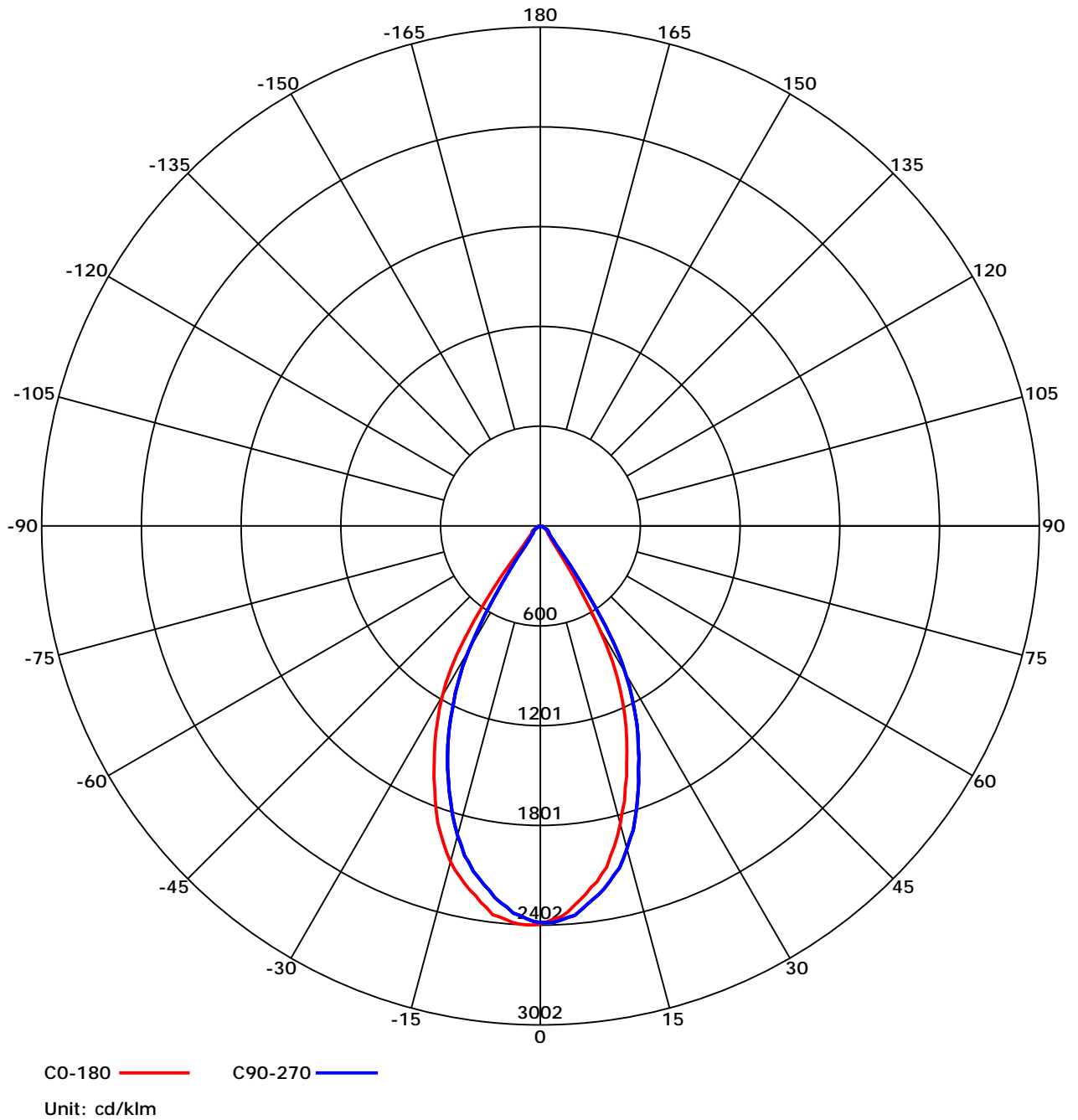
Luminous Intensity Distribution Curve



C Range: 0 - 360 Deg
C Interval: 45.0 Deg
Test Speed: High
Temperature: 22°C
Operators: 代婷婷
Test Date: 2023/12/4 15:51:18

G Range: 0 - 90 Deg
G Interval: 1.0 Deg
Test System: KEYUAN KYG-2000B Goniophotometer
Humidity: 50%
Test Distance: 8.558 m
Remarks:

Luminous Intensity Distribution Curve



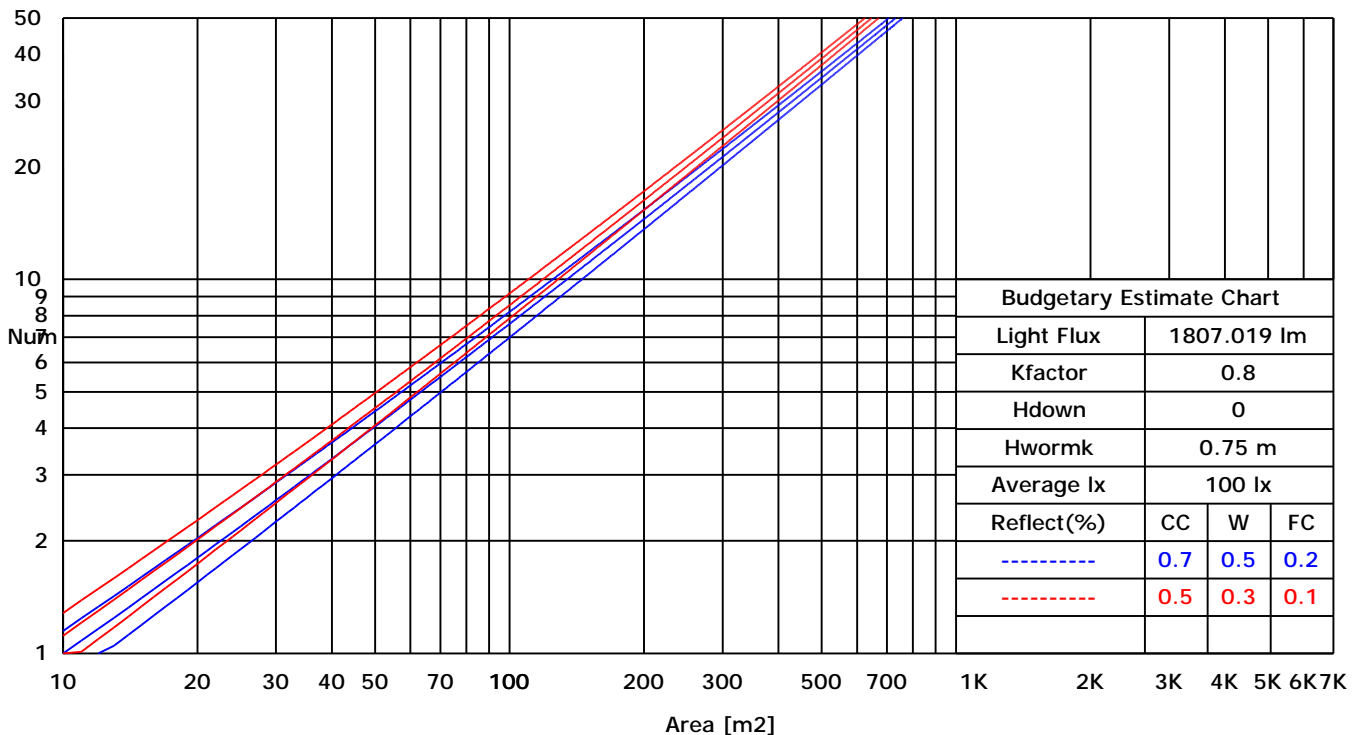
C Range: 0 - 360 Deg
C Interval: 45.0 Deg
Test Speed: High
Temperature: 22°C
Operators: 代婷婷
Test Date: 2023/12/4 15:51:18

G Range: 0 - 90 Deg
G Interval: 1.0 Deg
Test System: KEYUAN KYG-2000B Goniophotometer
Humidity: 50%
Test Distance: 8.558 m
Remarks:

UTILIZATION FACTORS TABLE

RHOCC	80			70			50			30			10			0
RHOW	50	30	10	50	30	10	50	30	10	50	30	10	50	30	10	0
RCR	COEFFICIENTS OF UTILIZATION FOR RHOFC=20															
0	1.19	1.19	1.19	1.16	1.16	1.16	1.11	1.11	1.11	1.06	1.06	1.06	1.02	1.02	1.02	1.00
1	1.05	1.03	1.02	1.04	1.02	1.00	1.00	0.98	0.96	0.95	0.93	0.91	0.89	0.86	0.84	0.79
2	1.00	0.98	0.97	0.99	0.97	0.95	0.96	0.93	0.91	0.92	0.89	0.86	0.86	0.83	0.81	0.76
3	0.96	0.94	0.93	0.95	0.93	0.91	0.92	0.89	0.87	0.88	0.85	0.82	0.83	0.80	0.77	0.73
4	0.92	0.90	0.89	0.91	0.89	0.87	0.88	0.86	0.83	0.85	0.82	0.79	0.81	0.77	0.74	0.70
5	0.89	0.87	0.86	0.88	0.86	0.84	0.85	0.82	0.80	0.82	0.79	0.76	0.79	0.75	0.71	0.68
6	0.85	0.84	0.83	0.84	0.82	0.81	0.82	0.79	0.77	0.79	0.76	0.73	0.76	0.72	0.69	0.65
7	0.83	0.81	0.80	0.82	0.80	0.78	0.79	0.77	0.75	0.77	0.73	0.71	0.74	0.70	0.67	0.63
8	0.80	0.79	0.78	0.79	0.77	0.76	0.77	0.74	0.72	0.75	0.71	0.69	0.72	0.68	0.65	0.61
9	0.78	0.76	0.76	0.77	0.75	0.74	0.75	0.72	0.70	0.72	0.69	0.66	0.70	0.66	0.63	0.59
10	0.75	0.74	0.73	0.74	0.73	0.72	0.73	0.70	0.68	0.70	0.67	0.65	0.68	0.64	0.61	0.58

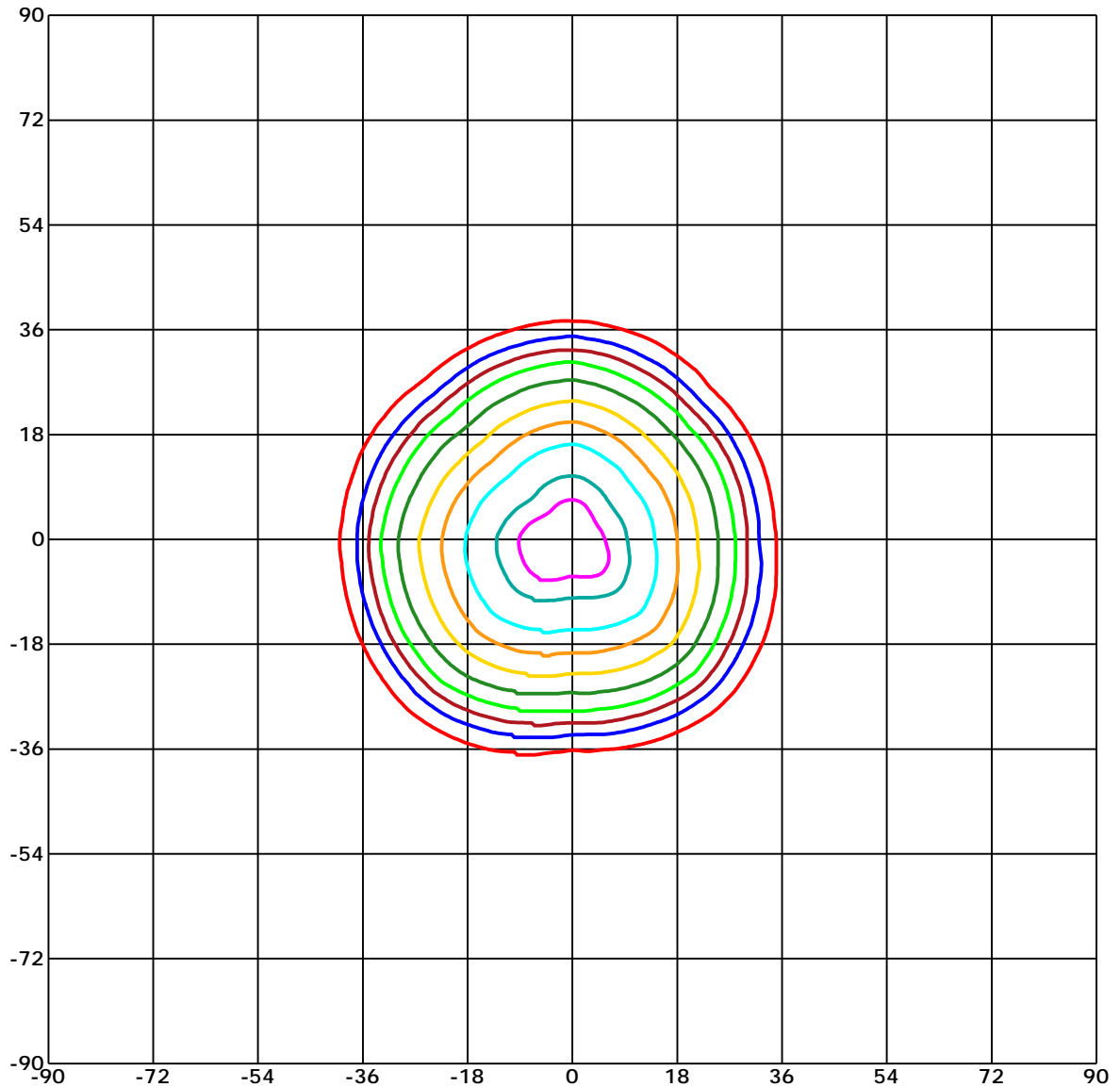
LUMINAIRE BUDGETARY ESTIMATE DIAGRAM



C Range: 0 - 360 Deg
 C Interval: 45.0 Deg
 Test Speed: High
 Temperature: 22°C
 Operators: 代婷婷
 Test Date: 2023/12/4 15:51:18

G Range: 0 - 90 Deg
 G Interval: 1.0 Deg
 Test System: KEYUAN KYG-2000B Goniophotometer
 Humidity: 50%
 Test Distance: 8.558 m
 Remarks:

ISOCANDELA DIAGRAM (RECTANGULAR)



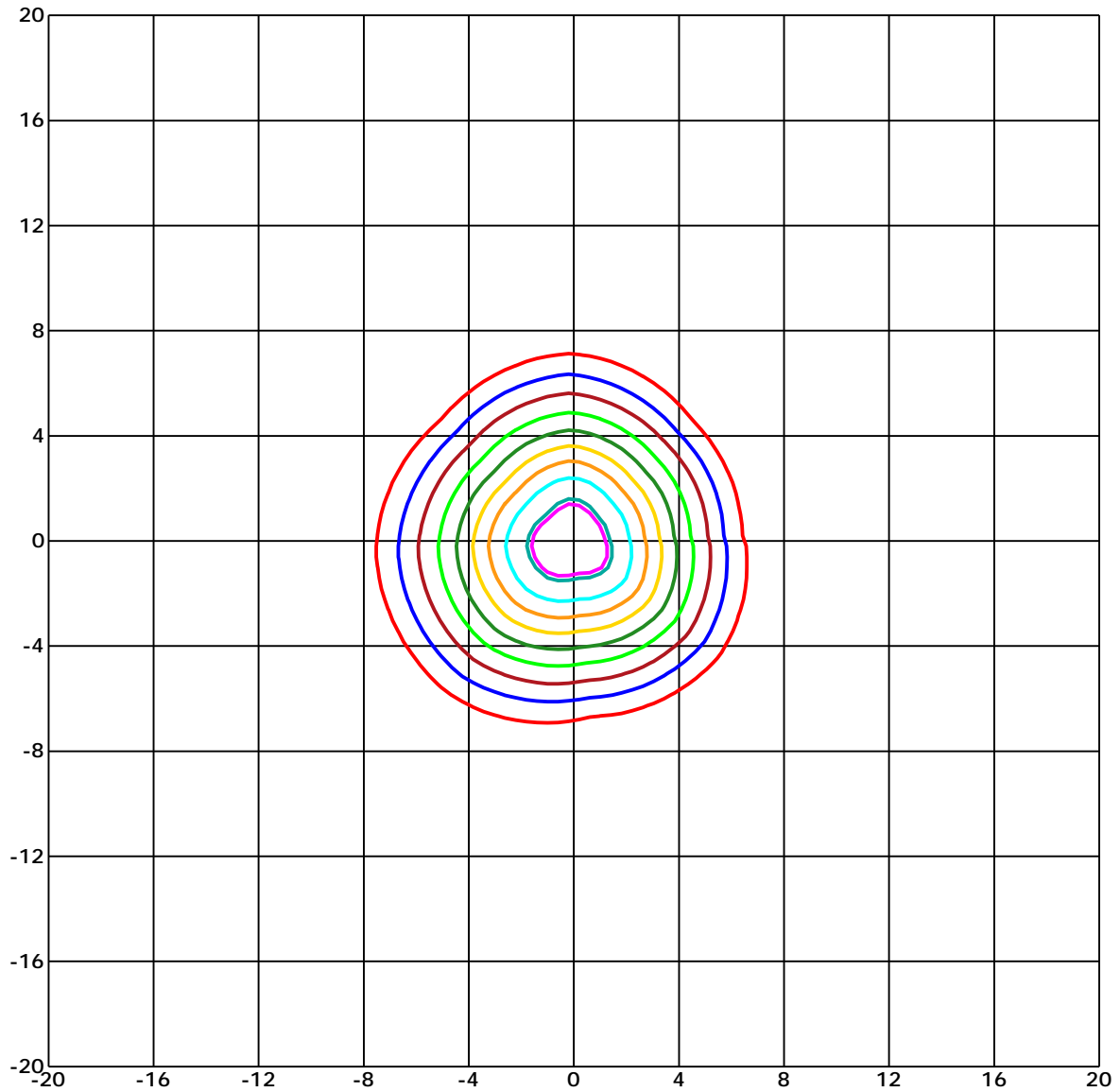
Unit of intensity:cd Imax(100%): 2401.592 cd

- | | |
|---------------------|---------------------|
| — 2281.512(95%Imax) | — 1200.796(50%Imax) |
| — 2161.433(90%Imax) | — 960.637(40%Imax) |
| — 1921.273(80%Imax) | — 720.478(30%Imax) |
| — 1681.114(70%Imax) | — 480.318(20%Imax) |
| — 1440.955(60%Imax) | — 240.159(10%Imax) |

C Range: 0 - 360 Deg
C Interval: 45.0 Deg
Test Speed: High
Temperature: 22°C
Operators: 代婷婷
Test Date: 2023/12/4 15:51:18

G Range: 0 - 90 Deg
G Interval: 1.0 Deg
Test System: KEYUAN KYG-2000B Goniophotometer
Humidity: 50%
Test Distance: 8.558 m
Remarks:

ISOLX DIAGRAM



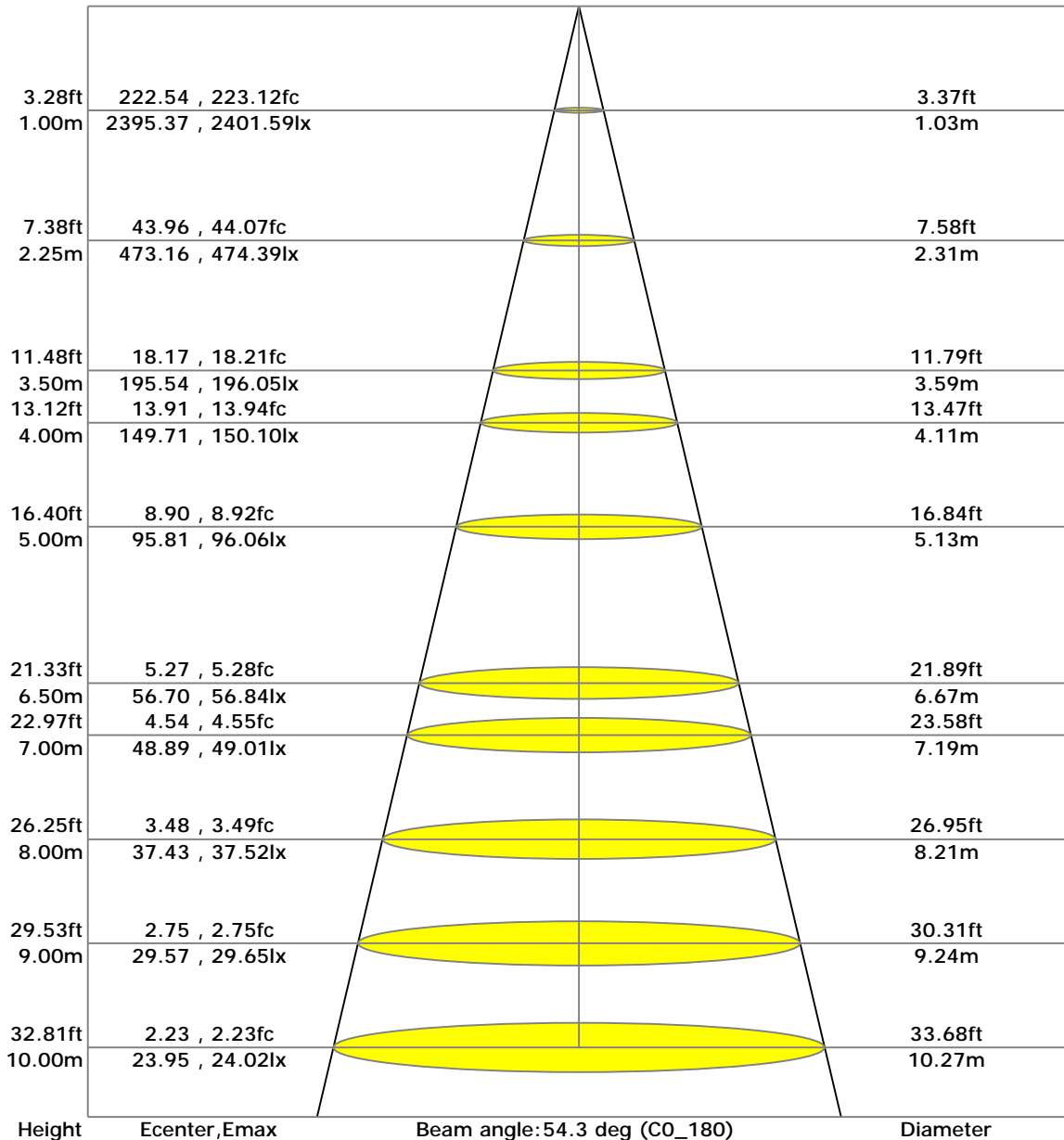
Unit of illumination: lx Height of plane: 10.0(m)/32.81(ft)

- | | |
|-------------------------------|-------------------------------|
| — 22.075(1%E _{max}) | — 11.997(0%E _{max}) |
| — 21.595(1%E _{max}) | — 9.598(0%E _{max}) |
| — 19.196(1%E _{max}) | — 7.198(0%E _{max}) |
| — 16.796(1%E _{max}) | — 4.799(0%E _{max}) |
| — 14.397(1%E _{max}) | — 2.399(0%E _{max}) |

C Range: 0 - 360 Deg
C Interval: 45.0 Deg
Test Speed: High
Temperature: 22°C
Operators: 代婷婷
Test Date: 2023/12/4 15:51:18

G Range: 0 - 90 Deg
G Interval: 1.0 Deg
Test System: KEYUAN KYG-2000B Goniophotometer
Humidity: 50%
Test Distance: 8.558 m
Remarks:

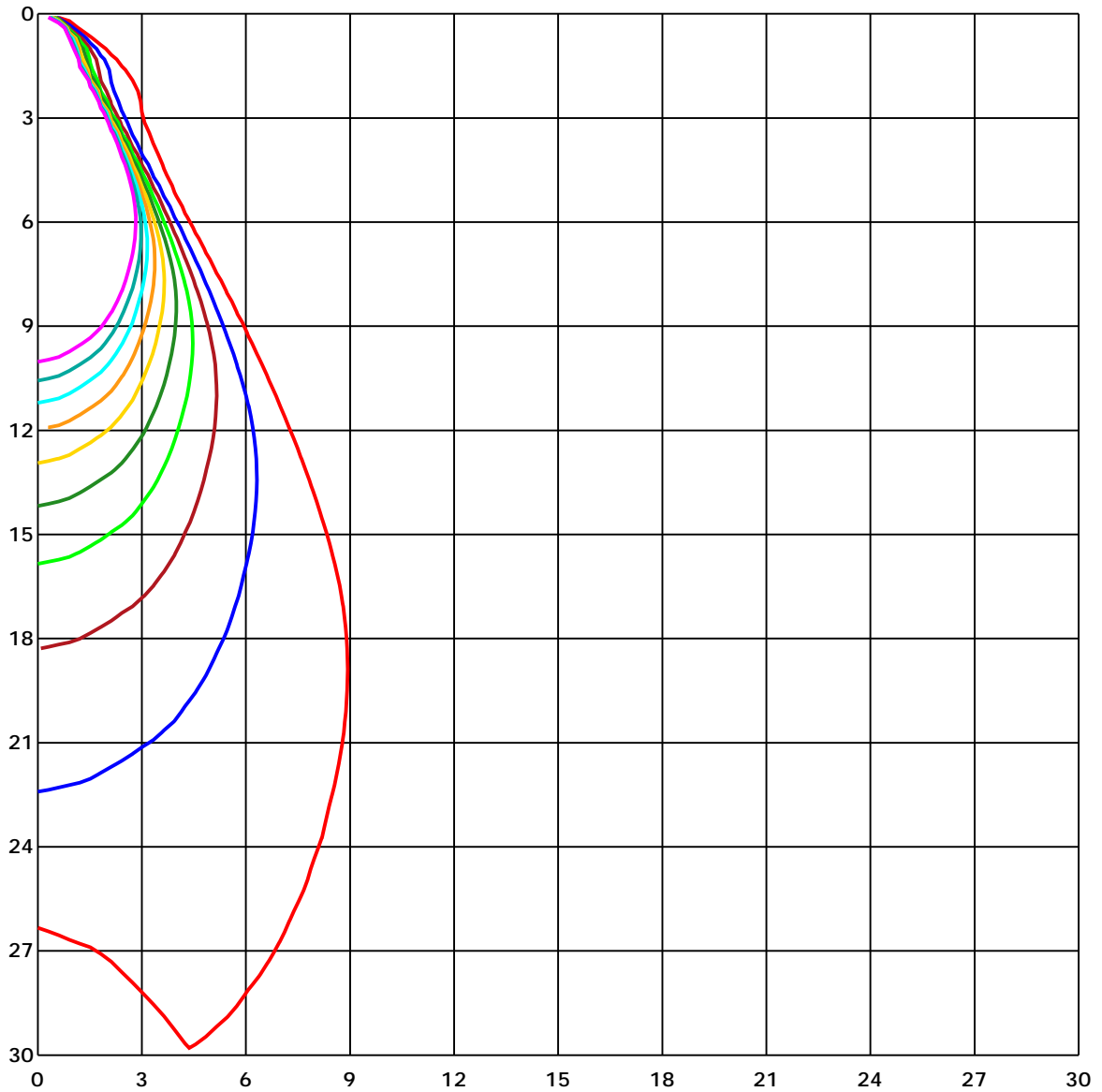
LX-DISTANCE DIAGRAM



C Range: 0 - 360 Deg
 C Interval: 45.0 Deg
 Test Speed: High
 Temperature: 22°C
 Operators: 代婷婷
 Test Date: 2023/12/4 15:51:18

G Range: 0 - 90 Deg
 G Interval: 1.0 Deg
 Test System: KEYUAN KYG-2000B Goniophotometer
 Humidity: 50%
 Test Distance: 8.558 m
 Remarks:

SPACE ISOLX DIAGRAM



Unit of illumination: lx

- | | |
|----------|----------|
| — 23.843 | — 11.922 |
| — 21.459 | — 9.537 |
| — 19.075 | — 7.153 |
| — 16.69 | — 4.769 |
| — 14.306 | — 2.384 |

C Range: 0 - 360 Deg
C Interval: 45.0 Deg
Test Speed: High
Temperature: 22°C
Operators: 代婷婷
Test Date: 2023/12/4 15:51:18

G Range: 0 - 90 Deg
G Interval: 1.0 Deg
Test System: KEYUAN KYG-2000B Goniophotometer
Humidity: 50%
Test Distance: 8.558 m
Remarks:

LUMINOUS DISTRIBUTION INTENSITY DATA

Gamma\C	C0	C45	C90	C135	C180	C225	C270	C315	C360	
G0	2395.37	2375.08	2385.85	2389.29	2395.37	2375.08	2385.85	2389.29	2395.37	
G1	2380.21	2362.26	2385.92	2379.18	2400.57	2383.43	2378.89	2390.75	2380.21	
G2	2363.87	2344.47	2384.75	2365.49	2401.59	2382.99	2363.95	2389.58	2363.87	
G3	2353.91	2327.84	2374.13	2350.62	2397.56	2381.52	2345.86	2382.4	2353.91	
G4	2330.11	2299.5	2360.94	2331.72	2391.34	2375.96	2335.24	2369.15	2330.11	
G5	2295.69	2275.33	2352.74	2313.56	2377.06	2363.65	2302.43	2346.08	2295.69	
G6	2263.68	2243.25	2324.54	2278.33	2364.46	2345.2	2279.28	2337.29	2263.68	
G7	2232.04	2218.79	2294.08	2253.72	2356.7	2336.56	2251.67	2310.85	2232.04	
G8	2194.03	2179.68	2267.93	2221.86	2318.61	2304.99	2213.15	2282.58	2194.03	
G9	2169.06	2152.87	2243.76	2193.01	2292.17	2278.77	2182.97	2249.25	2169.06	
G10	2126.43	2107.68	2214.54	2151.7	2256.8	2245.74	2146.87	2221.72	2126.43	
G11	2089.08	2061.32	2179.75	2123.36	2230.8	2218.13	2115.45	2187.66	2089.08	
G12	2027.49	2015.55	2142.11	2085.27	2197.25	2191.47	2070.4	2152.43	2027.49	
G13	1977.76	1965.67	2111.27	2046.38	2162.98	2156.31	2034.08	2122.99	1977.76	
G14	1919.53	1905.83	2061.25	1993.8	2130.46	2114.86	1974.46	2074.36	1919.53	
G15	1857.35	1847.46	2010.27	1938.06	2090.32	2082.64	1927.37	2025.07	1857.35	
G16	1785.5	1777.74	1956.0	1879.62	2045.14	2034.66	1872.0	1972.04	1785.5	
G17	1730.06	1719.73	1909.94	1821.17	1995.48	1986.76	1812.16	1922.68	1730.06	
G18	1651.4	1652.43	1845.41	1754.08	1943.77	1940.11	1746.98	1855.52	1651.4	
G19	1592.52	1578.38	1781.62	1687.8	1893.46	1890.38	1685.6	1799.05	1592.52	
G20	1514.81	1510.12	1714.17	1619.76	1830.25	1828.71	1619.84	1729.55	1514.81	
G21	1452.56	1449.41	1648.69	1554.21	1766.53	1767.12	1561.83	1671.32	1452.56	
G22	1383.71	1373.68	1575.38	1483.39	1700.03	1705.53	1490.2	1602.18	1383.71	
G23	1318.09	1311.79	1516.93	1422.6	1641.88	1655.21	1427.36	1536.56	1318.09	
G24	1245.73	1245.73	1447.14	1353.61	1573.69	1589.0	1352.73	1467.72	1245.73	
G25	1175.42	1171.68	1386.28	1288.65	1510.86	1522.43	1281.91	1401.44	1175.42	
G26	1096.61	1095.3	1321.75	1219.95	1447.28	1456.0	1198.71	1326.22	1096.61	
G27	1015.1	1015.83	1249.83	1149.05	1385.18	1389.35	1128.11	1254.37	1015.1	
G28	921.5	924.65	1177.4	1075.08	1315.6	1318.02	1042.78	1174.39	921.5	
G29	809.08	821.16	1107.16	999.94	1251.22	1246.97	961.71	1097.49	809.08	
G30	691.23	702.95	1022.71	916.37	1180.11	1169.63	863.42	1015.39	691.23	
G31	574.71	588.26	940.83	813.91	1105.7	1095.0	748.29	916.59	574.71	
G32	462.8	477.23	835.08	696.51	1021.25	1013.49	627.22	801.39	462.8	
G33	367.44	377.04	717.23	578.15	928.89	917.1	515.02	686.47	367.44	
G34	278.16	289.08	601.88	468.37	816.18	805.34	406.55	564.53	278.16	
G35	212.17	218.77	491.29	368.76	698.12	685.45	313.9	457.16	212.17	
G36	162.08	169.33	386.85	283.73	577.57	570.1	236.05	356.31	162.08	

C Range: 0 - 360 Deg
 C Interval: 45.0 Deg
 Test Speed: High
 Temperature: 22℃
 Operators: 代婷婷
 Test Date: 2023/12/4 15:51:18

G Range: 0 - 90 Deg
 G Interval: 1.0 Deg
 Test System: KEYUAN KYG-2000B Goniophotometer
 Humidity: 50%
 Test Distance: 8.558 m
 Remarks:

LUMINOUS DISTRIBUTION INTENSITY DATA(Continue 1)

Gamma\C	C0	C45	C90	C135	C180	C225	C270	C315	C360	
G37	132.34	137.76	300.65	216.5	470.34	457.38	176.29	272.89	132.34	
G38	114.62	118.14	228.8	168.38	370.22	359.75	137.4	208.29	114.62	
G39	102.39	104.73	180.54	139.37	283.51	276.04	115.28	161.93	102.39	
G40	93.09	94.77	150.29	120.41	219.64	211.66	102.24	135.79	93.09	
G41	85.25	86.2	131.83	107.74	173.8	167.72	93.38	118.94	85.25	
G42	77.49	78.95	118.43	97.63	146.04	140.25	85.91	107.95	77.49	
G43	70.09	71.26	107.88	88.84	128.32	124.14	79.1	98.73	70.09	
G44	65.62	66.21	99.17	80.49	115.86	111.18	70.31	90.89	65.62	
G45	62.18	62.47	91.04	72.51	105.03	101.51	65.26	82.47	62.18	
G46	59.91	59.62	82.76	66.72	95.36	92.28	61.96	76.32	59.91	
G47	58.3	58.08	76.68	63.35	86.06	83.2	59.84	72.14	58.3	
G48	56.91	56.76	72.21	61.01	79.03	76.83	57.93	69.06	56.91	
G49	55.95	55.52	69.43	59.03	73.83	72.51	57.2	67.09	55.95	
G50	54.86	54.27	67.16	57.71	70.09	69.28	55.95	65.48	54.86	
G51	53.54	53.17	65.26	56.76	68.11	67.16	54.71	63.86	53.54	
G52	51.85	51.63	63.72	55.3	66.14	65.18	53.1	62.33	51.85	
G53	50.39	50.39	62.62	53.9	64.89	63.72	51.71	60.94	50.39	
G54	48.41	48.56	61.01	52.15	63.13	62.11	50.02	59.32	48.41	
G55	45.92	46.29	59.62	50.83	61.37	60.57	47.31	57.42	45.92	
G56	43.14	43.8	57.64	48.19	59.47	58.59	44.46	55.15	43.14	
G57	39.99	40.57	55.52	45.55	57.86	56.69	41.31	52.44	39.99	
G58	37.06	37.65	52.73	42.63	55.22	54.05	38.23	49.29	37.06	
G59	34.06	34.72	49.66	39.18	52.66	50.75	35.15	46.07	34.06	
G60	31.2	31.71	46.51	36.03	49.22	47.46	32.23	42.85	31.2	
G61	28.49	29.08	43.36	32.96	46.07	44.16	29.22	39.77	28.49	
G62	25.41	26.0	40.35	29.95	42.55	40.87	26.15	36.55	25.41	
G63	22.92	23.36	36.99	27.17	39.62	37.65	23.73	33.4	22.92	
G64	20.43	20.95	33.98	24.32	36.4	34.57	21.02	30.69	20.43	
G65	18.46	18.75	31.13	21.97	33.18	31.86	18.6	27.9	18.46	
G66	16.33	16.48	28.34	19.48	30.25	28.86	16.33	24.97	16.33	
G67	14.35	14.79	25.56	17.28	27.83	26.15	14.35	22.78	14.35	
G68	12.82	12.89	22.92	15.23	24.83	23.51	12.52	20.43	12.82	
G69	11.13	11.21	20.73	13.55	22.34	21.24	10.77	18.46	11.13	
G70	9.96	9.74	18.53	11.65	20.43	19.19	9.37	16.63	9.96	
G71	8.64	8.5	16.63	10.03	18.24	17.36	8.06	15.01	8.64	
G72	7.54	7.25	14.87	8.79	16.41	15.6	6.96	13.26	7.54	
G73	6.74	6.3	13.33	7.62	14.94	14.06	6.08	12.08	6.74	

C Range: 0 - 360 Deg

C Interval: 45.0 Deg

Test Speed: High

Temperature: 22℃

Operators: 代婷婷

Test Date: 2023/12/4 15:51:18

G Range: 0 - 90 Deg

G Interval: 1.0 Deg

Test System: KEYUAN KYG-2000B Goniophotometer

Humidity: 50%

Test Distance: 8.558 m

Remarks:

